

CHAMBERED NAUTILUS



V = knit front and back O = Yarnover N = k2tog

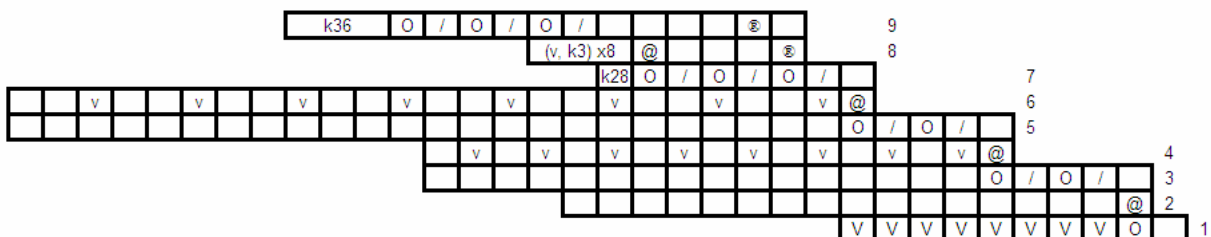
@ = yarnover, slip previous yarnover purlwise with the yarn in back; treat the parallel threads as a single stitch on the next row.

Ⓢ = (k1, YO): on future rows, (k1, YO) if either of the next two stitches is a YO, otherwise (k1, YO, N) when encountered. Note - the Ⓢ is continued vertically until it coincides w/ YO's on the horizontal

Yarnovers are always knit unless otherwise specified.

There is no true "start of round" on this pattern - it shifts every row;
Cast On 8; join and knit around.

- 1) k1, O, v x 8
- 2) @, k16
- 3) k1, (NO) x2; knit until reach 2nd YO
- 4) @, (v, k1)x8 (until reach @)
- 5) k1, (NO)x2, knit until reach 2nd YO
- 6) @, (v,k2)x8 (until reach @)
- 7) k1, (NO)x3, knit until reach first YO; Ⓢ, knit until reach 3rd YO
- 8) @; (v, k3)x8 (remember to work Ⓢ; knit until reach @)



- 9) k1, (NO)x3;knit until reach first YO; ®, knit until reach 3rd YO
- 10) @, (v, k4)x8; knit until reach @
- 11) k1, (NO)x3; knit until reach first YO; ®, knit until reach 3rd YO
- 12) @, (v, k5)x8, knit until reach @
- 13) k1, (NO)x4; knit until reach 1st YO of 4, ®, knit until reach 4rth YO
- 14) @, (v, k6) x7, knit until reach @ (working ® as per directions)
- 15) k1, (NO)x4; knit until reach 1st YO of 4, ®, knit until reach 4rth YO
- 16) @, (v, k7)x8; knit until reach @
- 17) k1, (NO)x4,knit until reach 1st YO of 4, ®, knit until reach 4rth YO
- 18) @, (v, k8)x8; knit until reach @
- 19) k1, (NO) x4, knit until reach 1st YO of 4, ®, knit until reach 4rth YO
- 20) @, (v, k9)x8; knit until reach @
- 21) k1, (NO)x5; knit until reach 1st YO of 5, ®, knit until reach 5th YO
- 22) @, (v, k10)x7; knit until reach @, (working ® as k1, yo as per directions)
- 23) k1, (NO) x5; knit until reach 1st YO of 5, ®, knit until reach 5th YO
- 24) @, (v, k11)x8, knit until reach @
- 25) k1, (NO)x5, knit until reach 1st YO of 5, ®, knit until reach 5th YO
- 26) @, (v, k12)x8, knit until reach @
- 27) k1, (NO)x5, knit until reach 1st YO of 5, ®, knit until reach 5th YO
- 28) @, (v, k13) x8, knit until reach @
- 29) k1, (NO)x5, knit until reach 1st YO of 5, ®, knit until reach 5th YO
- 30) @, (v, k14)x8, knit until reach @
- 31) k1, (NO)x6, knit until reach 1st YO of 6, ®, knit until reach last yo of series.
- 32) @, (v, k15)x7, knit until reach @ (working ® as per directions)
- 33) k1, (NO)x6, knit until reach 1st YO of 6, ®, knit until reach last yo of series.
- 34) @, (v,k16)x8, knit until reach @
- 35) k1, (NO)x6, knit until reach 1st YO of 6, ®, knit until reach last yo of series.
- 36) @, (v, k17) x8, knit until reach @
- 37) k1, (NO)x6, knit until reach 1st YO of 6, ®, knit until reach last yo of series.
- 38) @, (v, k18) x8, knit until reach @
- 39) k1, (NO)x6, knit until reach 1st YO of 6, ®, knit until reach last yo of series.
- 40) @, (v, k19)x8; knit until reach @
- 41) k1, (NO)x6, knit until reach 1st YO of 6, ®, knit until reach last yo of series.
- 42) @, (v, k20) x8, knit until reach @
- 43) k1, (NO)x7, knit until reach 1st YO of 7, ®, knit until reach last yo of series.

- 44) @, (v,k21) x7, knit until reach @ (working @ as per directions)
- 45) k1, (NO)x7, knit until reach 1st YO of 7, @, knit until reach last yo of series
- 46) @ (v, k22)x8, knit until reach @
- 47) k1, (NO)x7, knit until reach 1st YO of 7, @, knit until reach last yo of series
- 48) @, (v, k23) x8;knit until reach @
- 49) k1, (NO)x7, knit until reach 1st YO of 7, @, knit until reach last yo of series
- 50) @, (v, k24)x8; knit until reach @
- 51) k1,(NO)x7, knit until reach 1st YO of 7, @, knit until reach last yo of series
- 52) @, (v, k25)x8; knit until reach @
- 53) k1, (NO)x7, knit until reach 1st YO of 7, @, knit until reach last yo of series
- 54) @, (v, k26)x8, knit until reach @
- 55) k1, (NO)x7, knit until reach 1st YO of series, @,knit until last yo of series
- 56) @, (v, k27) x8; knit until reach @
- 57) k1, (NO)x8; knit until reach 1st YO of series, @,knit until last yo of series
- 58) @, (v, k28)x8, knit until reach @
- 59) k1,(NO)x8, knit until reach 1st YO of series, @,knit until last yo of series
- 60) @, (v, k29) x8, knit until reach @
- 61) k1, (NO)x8, knit until reach 1st YO of series, @,knit until last yo of series
- 62) @, (v,k30) x8, knit until reach @
- 63) k1, (NO)x8, knit until reach 1st YO of series, @,knit until last yo of series
- 64) @, (v, k31)x8, knit until reach @
- 65) k1, (NO)x8, knit until reach 1st YO of series, @,knit until last yo of series
- 66) @, (v, k32)x8, knit until reach @
- 67) k1, (NO)x8, knit until reach 1st YO of series, @,knit until last yo of series
- 68) @, (v, k33)x8, knit until reach @
- 69) k1, (NO)x8, knit until reach 1st YO of series, @,knit until last yo of series
- 70) @, (v, k34)x8, knit until reach @
- 71) k1, (NO)x8, knit until reach 1st YO of series, @,knit until last yo of series
- 72) @,knit until reach final @ (place marker - this is now start of round); YO, k1, (YO,skp) to @; knit1, (NO)x9
- 73) knit to marker. YO,k1; move marker 1 left; (k36+x,v) until reach marker; with the following exception - any live @ work as previous; final YO of previous row work as @; if the increase falls on a YO, then work it in the following stitch.
- 74) YO,k1 (move marker 1 left) (YO,skp) to @, k1, (NO)x9

75) knit to marker. YO,k1; move marker 1 left; (k37,v) until reach marker; with the following exception - any live ® work as previous; final YO of previous row work as @; if the increase falls on a YO, then work it in the following stitch.

76) YO,k1 (move marker 1 left) (YO,skp) to @, k1, (NO)x9

77) knit to marker. YO,k1; move marker 1 left; (k38,v) until reach marker; with the following exception - any live ® work as previous; final YO of previous row work as @; if the increase falls on a YO, then work it in the following stitch.

78) YO,k1 (move marker 1 left) (YO,skp) to @, k1, (NO)x9

79) knit to marker. YO,k1; move marker 1 left; (k39,v) until reach marker; with the following exception - any live ® work as previous; final YO of previous row work as @; if the increase falls on a YO, then work it in the following stitch.

80) YO,k1 (move marker 1 left) (YO,skp) to @, k1, (NO)x9

81) knit to marker. YO,k1; move marker 1 left; (k40,v) until reach marker; with the following exception - any live ® work as previous; final YO of previous row work as @; if the increase falls on a YO, then work it in the following stitch.

82) YO,k1 (move marker 1 left) (YO,skp) to @, k1, (NO)x9

83) knit to marker. YO,k1; move marker 1 left; (k41,) until reach marker; with the following exception - any live ® work as previous; final YO of previous row work as @; if the increase falls on a YO, then work it in the following stitch.

84) YO,k1 (move marker 1 left) (YO,skp) to @, k1, (NO)x9

85) knit to marker. YO,k1; move marker 1 left; (k42,v) until reach marker; with the following exception - any live ® work as previous; final YO of previous row work as @; if the increase falls on a YO, then work it in the following stitch.

86) YO,k1 (move marker 1 left) (YO,skp) to @, k1, (NO)x9

87) knit to marker. YO,k1; move marker 1 left; (k43,v) until reach marker; with the following exception - any live ® work as previous; final YO of previous row work as @; if the increase falls on a YO, then work it in the following stitch.

88) YO,k1 (move marker 1 left) (YO,skp) to @, k1, (NO)x10

89) knit to marker. YO,k1; move marker 1 left; (k44,v) until reach marker; with the following exception - any live ® work as previous; final YO of previous row work as @; if the increase falls on a YO, then work it in the following stitch.

repeat 88 and 89 NINE more times - increasing the knit stitches between increases by one each repeat

rows 106 and 107 will be:

106) YO,k1 (move marker 1 left) (YO,skp) to @, k1, (NO)x10

107) knit to marker. YO,k1; move marker 1 left; (k53,v) until reach marker; with the following exception - any live ® work as previous; final YO of previous row work as @; if the increase falls on a YO, then work it in the following stitch.

108) 74) YO,k1 (move marker 1 left) (YO,skp) to @, k1, (NO)x11

109) knit to marker. YO,k1; move marker 1 left; (k54,v) until reach marker; with the following exception - any live ® work as previous; final YO of previous row work as @; if the increase falls on a YO, then work it in the following stitch.

repeat rows 109) and 110) up to 10 more times; adding 1 to the number of knits in the (v, k#) for each repeat...
Somewhere in this section the last ® should bump into the horizontal Yo's.

STOP the YO's at that point. Place EOR marker. knit around once to end of YO's.

Your pattern now becomes:

A) (YO,skp) around

B) k1; (v, k #) around

Initially the # is 1/8 (rounded to down to nearest whole number) total stitches in round

For each repeat, add one to #

repeat rows A & B until "big enough"

knit two rows

Add Neptune's Edge or other edge.

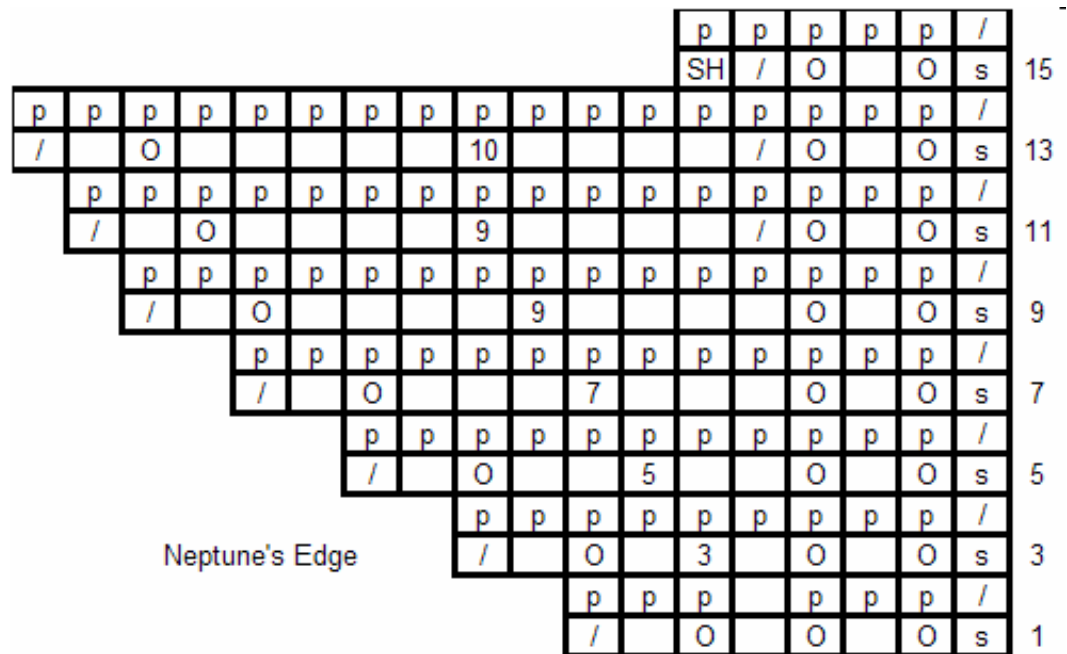
NEPTUNE'S EDGE

N or / = k2tog; O = yarnover SH = knit, slip back to left needle, pass remaining stitches over stitch, slip back to right needle.

Cast on 6, purl back 5, purl last stitch together with live stitch on shawl body

1) slip 1, (OK)x3; N

2) and all return rows: purl until last stitch, purl last stitch together with live stitch of shawl body



3) slip1, OKO, k3, OKN

5) slip 1, OKO, k5, OKN

7) slip 1, OKO, k7, OKN

9) slip 1, OKO, k9, OKN

11) slip 1, OKON, k9, OKN

13) slip 1, OKON, k10, OKN

15) slip 1, OKON, SH

16) purl 5, p2tog

repeat rows 1-16 around; graft end to beginning.