

# HARPERHALL SHAWL

One of the traditional Designs shared by the Harper Hall and the Healer Hall  
The Khideeping motifs are most common in those Halls though they are occasionally seen in Keroon .

Suggested Yarn: sport

Suggested Needle: 4.5 - 5mm



Cast On: 493 stitches

The first two and last two stitches are border stitches.

Every Right Side row begins with p2tog, YO; and ends with YO, p2tog.

The borders are not charted.

Work 4 rows in garter stitch. Then commence charts.

**For the next 52 rows:**

Work Chart A - the section between the heavy black lines is repeated 4 times. Work Chart B (Center). Work chart A a second time.

All return rows are knit as presented with the following exceptions.

Yarnovers are always purled.

Nupps (np5 on chart) are a p5tog on the return row.

**Row 57) and all right side rows from here on w/o specific instructions:**

Work border; skp; knit until 2 stitches before center panel; k2tog.

Work appropriate row of center panel; skp, knit until 2 stitches remain before border, k2tog; border.

Return rows are knit as presented, with the exceptions as noted above.

Row 107) border; skp, k7, (k8, k2tog) x12; center; skp, (k8, k2tog) x11, k7, k2tog border

Row 117) border, k5, (k8, k2tog) x10; center, (k2tog k8) x10, k5, border

Row 127) border, (skp until center); work center, (k2tog to border); border

Row 133) border, (skp, k2)x12; center, (k2, k2tog) x12, border

137) border, skp to center, center, k2tog to border, border

139) border, (k3, k2tog) x2; work center stitches as present, (skp, k3) x2; border

141) border, skp, k1, k2tog, work center stitches as present, skp, k1, k2tog; border

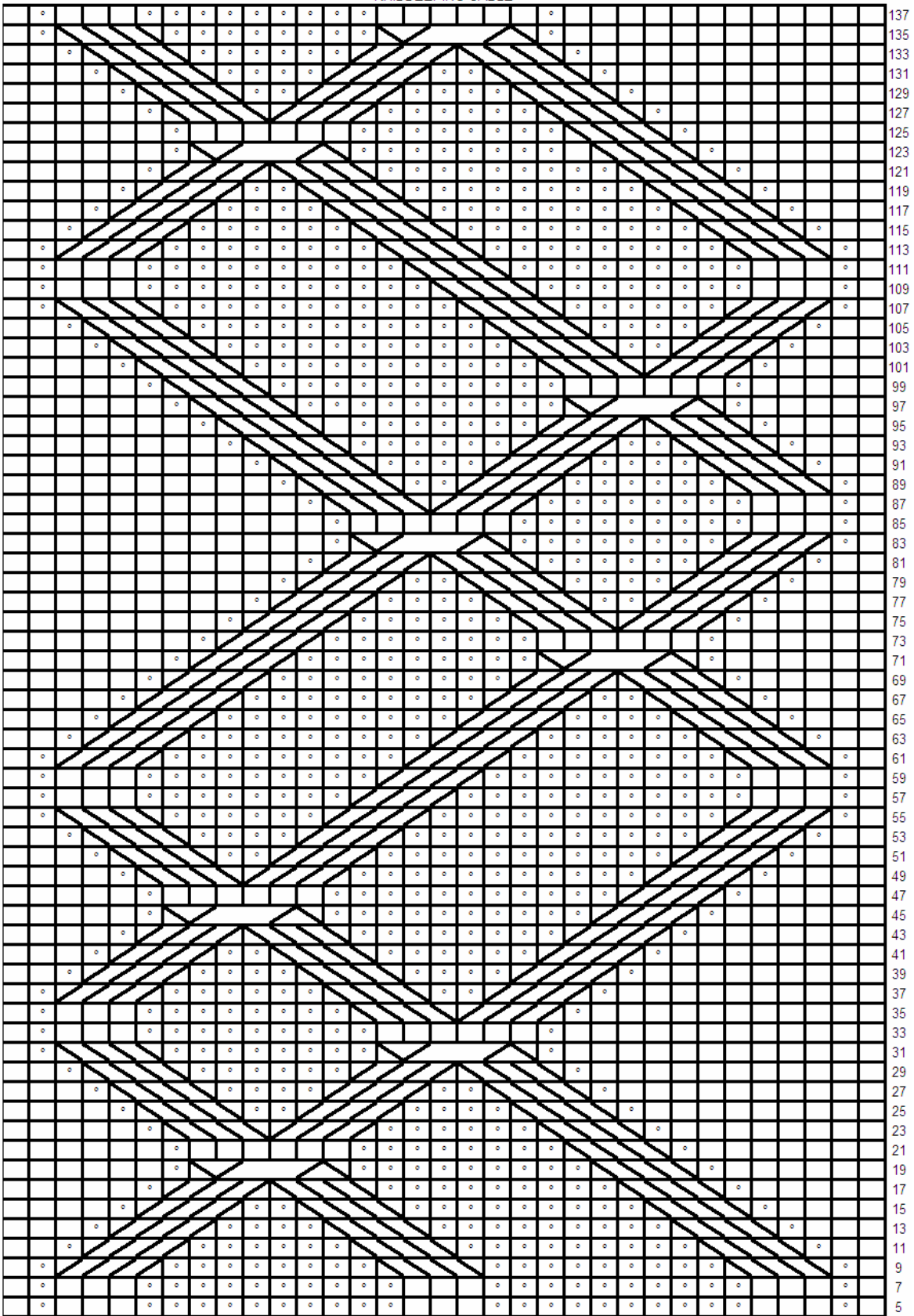
143) border, A, knit across center, A, border

144) purl across

145) work border as a perpendicular knit on edge across center, graft to left side. (p2tog, YO, k2tog; turn, slip1, p2; turn. Repeat across center)

Acknowledgment: Test Knitting and Photo courtesy of Dyeingfool.

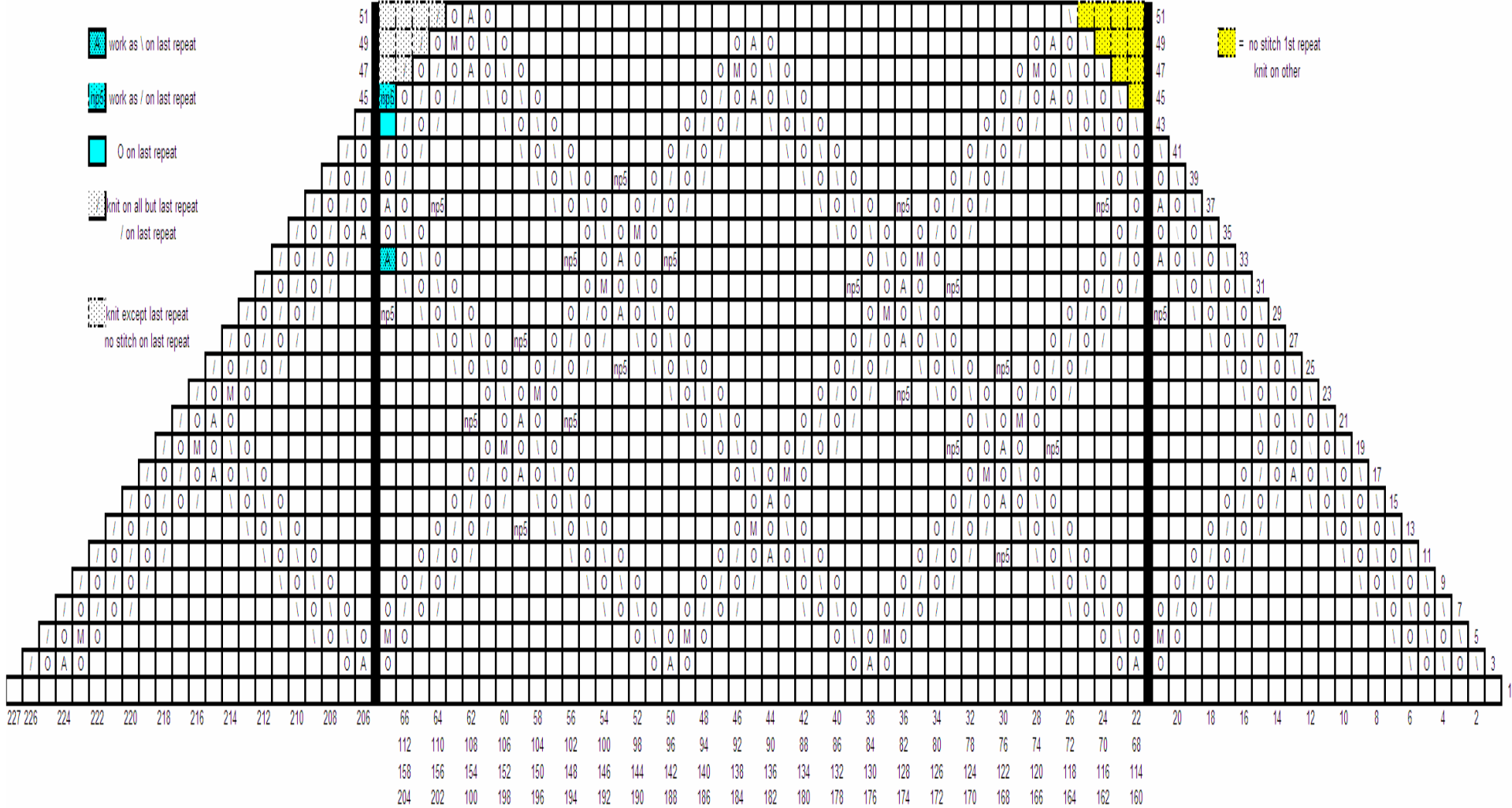
HARPERHALL SHAWL CHART B  
KHIDDEEPING CABLE



32	30	28	26	24	22	20	18	16	14	12	10	8	6	4	2
○					▨										
=purl					= left cross 3k over 1 p										
□															
=knit					▩										
					= right cross 1p under 3k										
					▧										
					= 3k right cross 3k										

HARPERHALL SHAWL Chart A

KHIDEERING LACE



work as \ on last repeat

work as / on last repeat

O on last repeat

knit on all but last repeat  
/ on last repeat

knit except last repeat  
no stitch on last repeat

= no stitch 1st repeat  
knit on other

np5 = nupp - make 5 (k, O, k, O, k) in single stitch, purl together on return row.

O = yarnover

Blank square = knit

A = slip 2 together, knit 1, pssso

/ = k2tog

\ = left leaning decrease

M = k3tog

Copyright 2009 MMario Leo a Pola de Finale Emelia

Free Will donations may be made through PayPal to MMario@familyoffaire.com