

HEALER'S SQUARE

Discovered carefully preserved in the storerooms of Healer Hall
Records indicate this was commissioned by a MasterHealer for his bride
It features the khideeping lace favored by the Healer and Harper Halls
with a borders of "firelizards in flight" and other lace.
The edge is "Willow Herb" - very appropriate for Healer Hall.



Stitch Key:

blank = knit

p = purl

w = k1, O, k1 in single stitch

O = yarnover

^ = purl 2 together

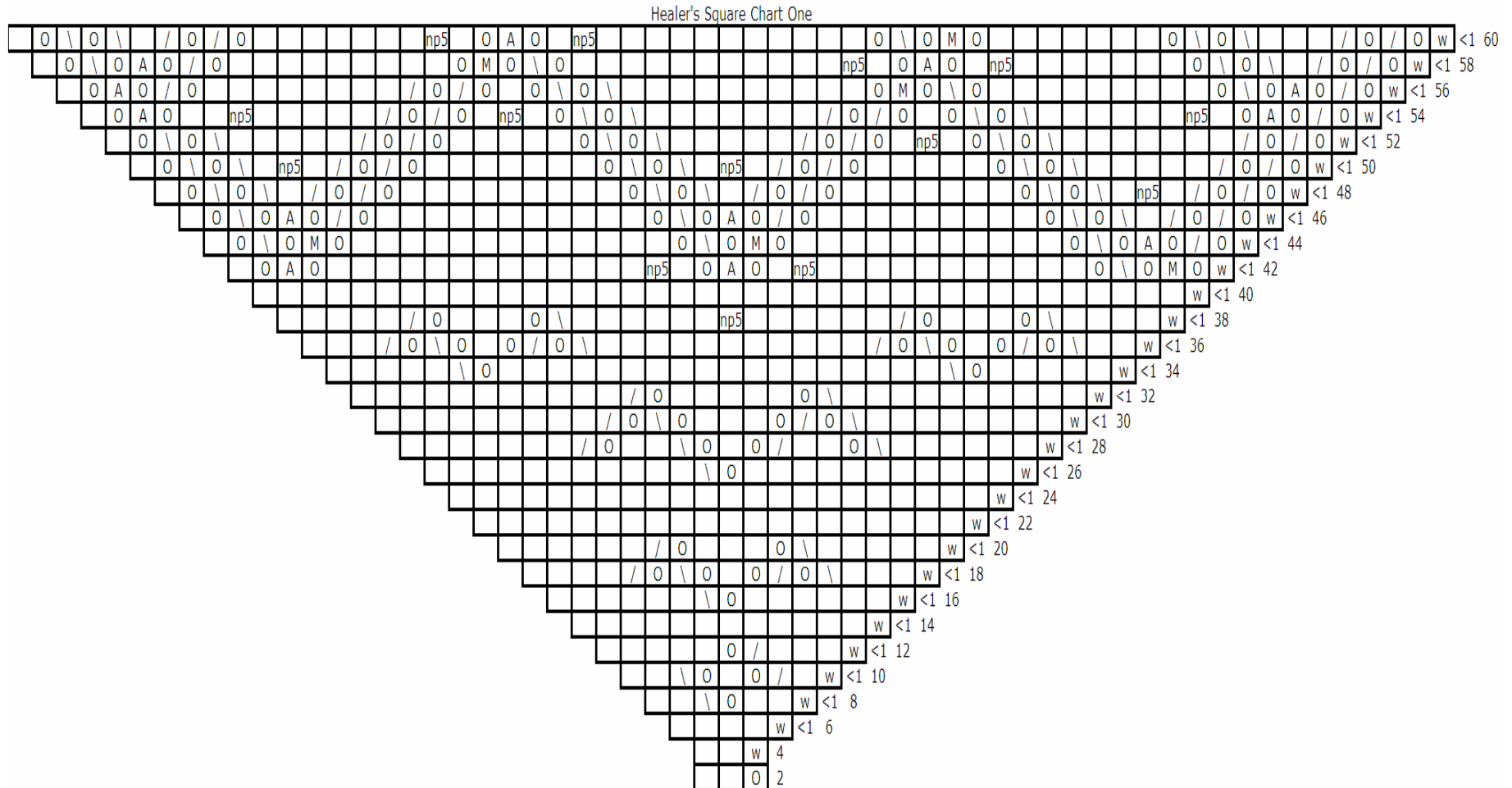
A = slip 2, k1, pss0

M = k3 tog

<1 = move start of round 1 stitch left (when outside of box)

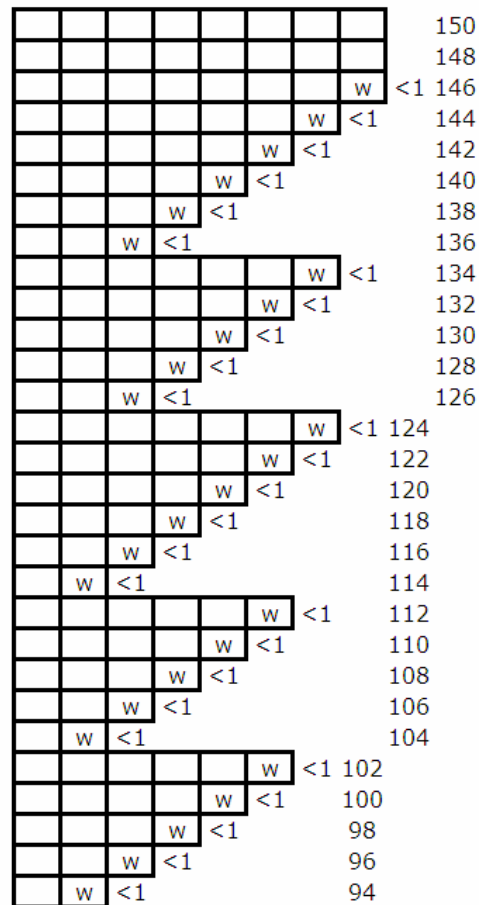
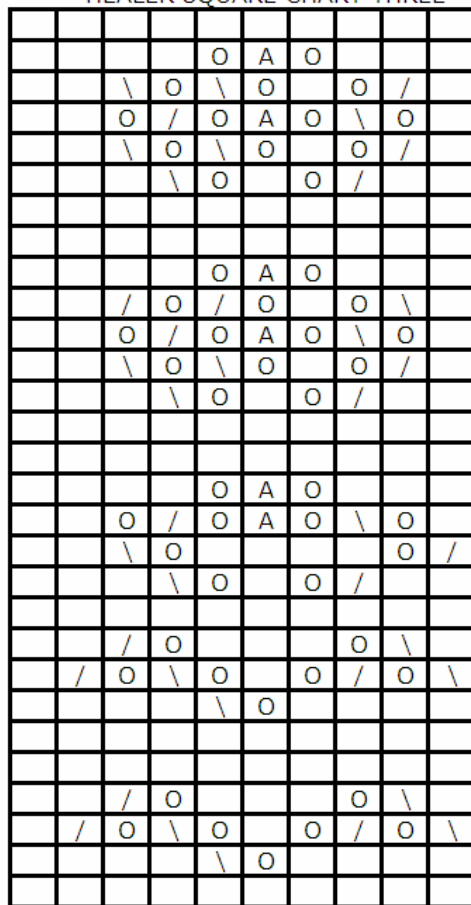
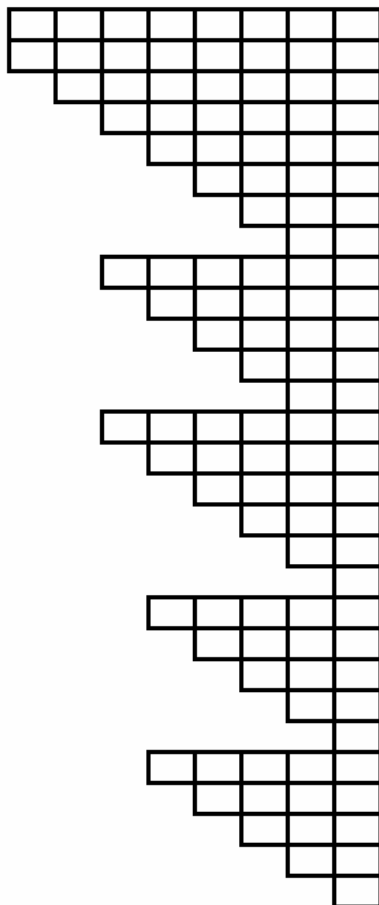
<1 = move stitch to left needle when boxed in on chart

Cast on: 8: join & knit around once. Commence working chart with row 2. Each row of the chart is repeated 4 times per round.



M on this chart = k3tog. "np5" is a five stitch nupp; k5 tog on the "resting" row. O = yarnover. \ = skip. / = k2tog. w = k1,O,k1 in a single stitch. Rows not charted are knit plain.

HEALER SQUARE CHART THREE



For the Willow Herb Edge:
Use a provisional cast on:
10 stitches

Starting with row 1 of the chart work around the body of the shawl, attaching to the shawl body with the p2tog on inward rows.
When three stitches remain before a corner, work two repeats of the chart attaching only every other return row.
Attach final row to beginning.

Willow Herb Edge

