

LEONARD OF QUIRM'S SHAWL

Written from calculations found in a notebook at Unseen University

Test Knitting by sjlmorris & dartfrog911

Photos courtesy of Dartfrog911



Suggested Yarn: fingering or lighter

Suggested Needle: 4 to 4.5 mm

Stitch Key:

O = yarnover

m5 = {O, k1, O, k1, O} in single stitch

m9 = {O, k1, O, k1, O, k1, O, k1, O} in a single stitch

A = double decrease:slip 2 as if to knit, k1, pssso preferred

Rows not written or charted are knit plain.

Copyright MMario Leo a Pola de Finale Emilia - 2009

Free Will offerings may be made through PayPal to mmario@familyoffaire.com

- 1) knit
- 2) k1, OKO (16 stitches)
- 4) k2, m5, k1 (32 stitches)
- 8) k4, m9, k3 (64 stitches)
- 16) k1; *k7, m9 ; repeat from * (128 stitches)
- 32) k11, m9, k4 (192)

36,38, 40,42, 44) k7, (k2tog, O)x4, k1, (O, skp)x4

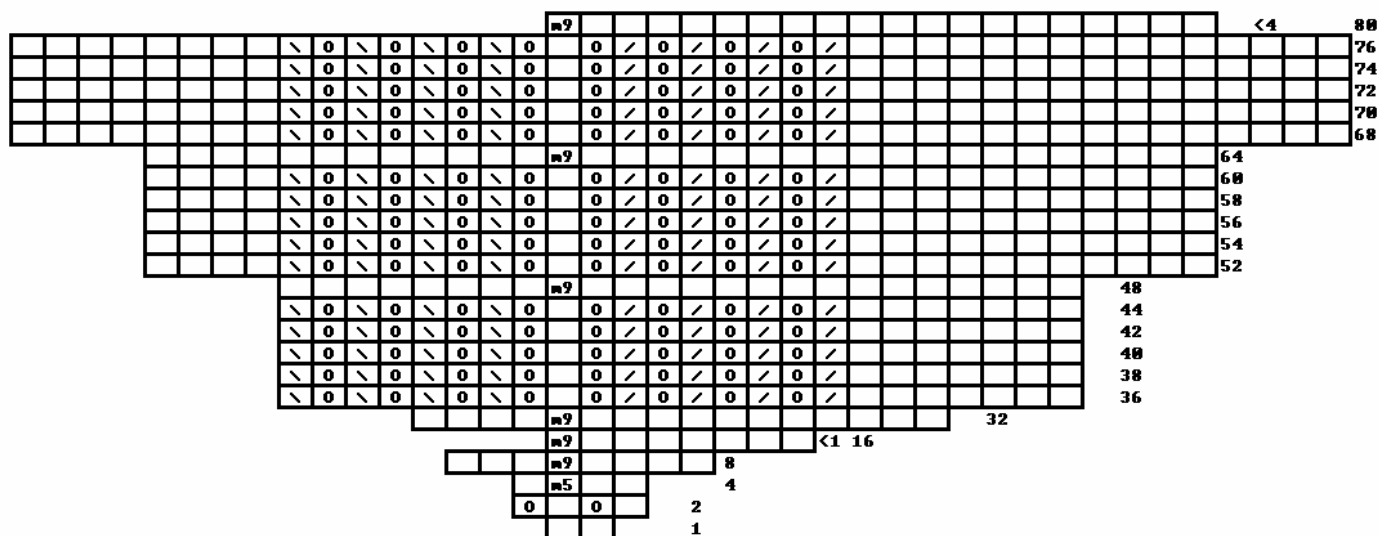
48) k15, m9, k8 (256)

52, 54, 56, 58, 60) k11, (k2tog, O)x4, k1, (O, skp)x4, k4

64) k19, m9, k12 (320)

68,70,72,74,76)
 k15, (k2tog, O)x4, k1, (O, skp)x4, k8

80) k4; *k19, m9; repeat from * (448)



84) k4; *k11, (k2tog, O)x4, k1, (O, skp)x4; repeat from *

86,88,90,92,94,96,98,100,102,104,106,108, 110)
 k11, (k2tog, O)x4, k1, (O, skp)x4

112) k 19, m9, k8 (576)

114, 116, 118,120,122,124,126,128,130,132,134, 136, 138,140, 142)
k15, (k2tog,O)x4, k1, (O, skp)x4; k4

144) k6; *k17, O, k1, O; repeat from *

146) k2; * k12, k2tog, O, k3, O, skp ; repeat from *

148) k1; * k 10, (k2tog, O) x2, k1, (O, skp)x2; repeat from *

150) k1; *k9, (k2tog, O) x2, k3, (O, skp)x2; repeat from *

152) k9, (k2tog, O) x2, k1, O, k1, O, k1, (O, skp) x2

154) k1, *k7, (k2tog, O) x3, k3, (O, skp) x3; repeat from *

156) k7, (k2tog, O) x3, k1, O, k1, O, k1, (O, skp) x3

158) k1, *k5, (k2tog, O) x4, k3, (O, skp) x4; repeat from *

160) k1; * k3, (k2tog, O)x5, k1, (O, skp) x5; repeat from *

162) k1; * k1, (k2tog, O)x5, k3, (O, skp) x5; repeat from *

164) k2, O,(k2tog, O)x5, k1, (O, skp) x5; O, A; repeat from *

165, 166) knit

167) Bind off using:

k1, * return stitch to left needle, k1, return stitch to left needle, k2tog tbl); repeat from *



