

# ***RUMTHA***

May be worked in fine thread in the square as a Gather Shawl  
or  
as a working day triangle shawl in heavier yarn.



Picture and Test knit  
courtesy of  
"Alanesian"

**For Triangle Shawl:**

Cast on 10 stitches, do not join.

Three knit border stitches commence right side rows;

the chart (or written instruction) is worked five times; until row 20; remaining stitches are knit. Beyond row 20 the chart/instruction is worked four times and the first 9 stitches are worked one more time.

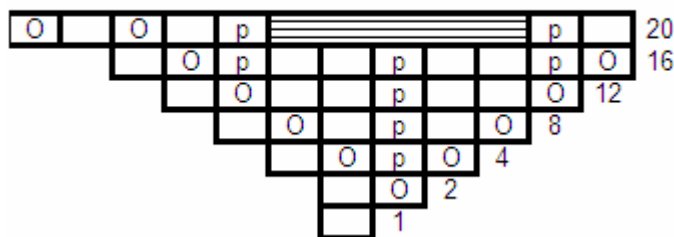
Return rows are worked as stitches present themselves.

All YO's are purled.

Suggested is a fingering to sport weight yarn; 4.5 to 5 mm needle depending on your individual gauge.

*See written instructions for row 20 on.*

Ruatha Chart One



**For a Gather Shawl:**

Cast on 8 stitches, join.

Work chart/instruction 8 times a round.

All un-numbered rounds are worked as the stitches present, knitting into YO's.

Suggested is lace-weight or finer with 4.5 to 5 mm needles

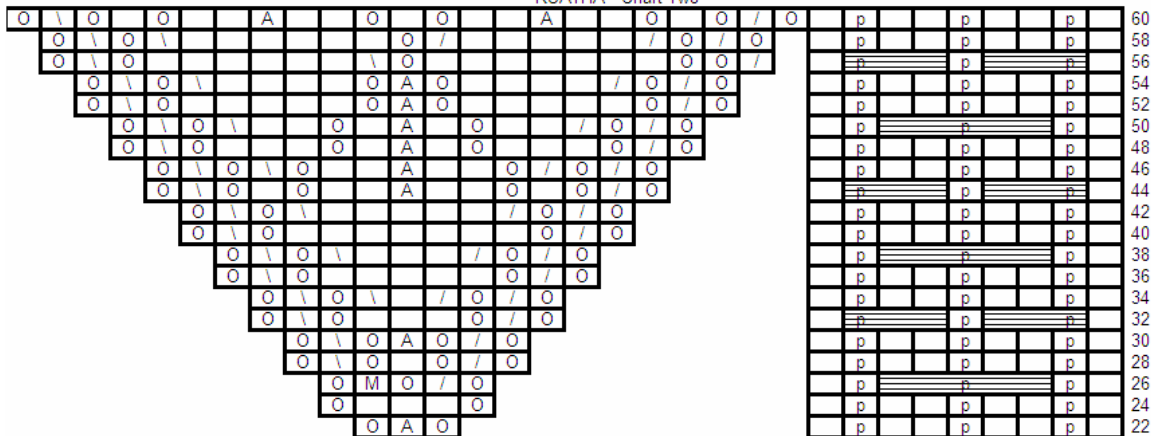
blank = knit      O = yarnover      p = purl      / = knit two together      \ = slip 1, k1, pss0      A = double decrease  
 M=knit three together through back loop      m = p3tog      N= / = k2tog  
 striped background = WRAP BLOCK = \*yarn forward, slip stitches as a block to right needle, yarn back; slip stitches left; repeat once from \*; work stitches as presented.

- 1) knit
- 2) OK,
- 4) O,p1,OK
- 8) O, kpk, OK
- 12) O, k2, p, k2, OK
- 16) O, (p1, k2)x2; p1, OK

**Note: TRIANGLE VERSION -for row 20: Ignore last three stitches of chart/instruction on the fifth repeat.**

20) k1, p1, wrap block, p1, k1, OKO

RUATHA - Chart Two



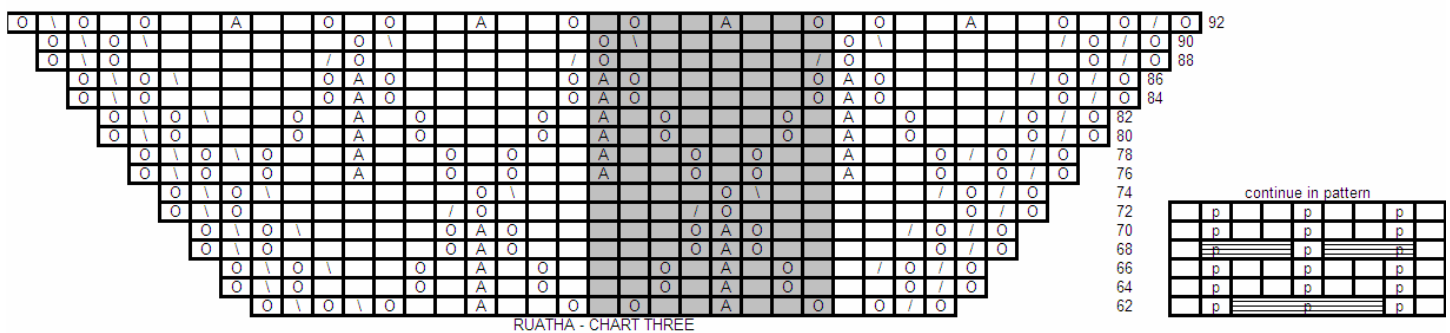
22) k1, (p1, k2)x2; p1, k1; OAO

**Note: TRIANGLE VERSION -row 22 onwards - work chart/instruction 4 times plus nine stitches of a fifth repeat.**

24) k1, (p1, k2)x2; p1, k1; O, k3, O

- 26) k1, p1, wrap block, p1, k1; ONO, M, O  
 28) k1, (p1, k2)x2; p1, k1; ONO, k1, O, skp, O  
 30) k1, (p1, k2)x2; p1, k1; ONO, A, O, skp, O  
 32) k1, wrap 3-block, p1, wrap 3-block; k1, ONO, k3, O, skp O  
 34) k1, (p1, k2)x2; p1, k1; (ON)x2, k1, (skp,O)x2  
 36) k1, (p1, k2)x2; p1, k1; ONO, k5, O, skp, O  
 38) k1, p1, wrap 5 st block, p1, k1; (ON)x2, k3, (skp,O)x2  
 40) k1, (p1, k2)x2; p1, k1; ONO, k7, O, skp, O  
 42) k1, (p1, k2)x2; p1, k1; (ON) x2, k5 (skp,O)x2  
 44) k1, wrap 3-block, p1, wrap 3-block; k1, ONO, KO, K2,A,K2,OKO, skp,O  
 46) k1, (p1,k2)x2; p1, k1; (ON)x2,O k2,A,k2,O, (skp, O)x2  
 48) K1, (P1,K2)X2;p1, k1; ONO, k3, OK, A, KO, k3, O, skp, O  
 50) k1, p1, wrap 5 st-block, p1, k1; (ON) x2, k2, OK, A, KO, k2, (skp,O)x2  
 52) k1, (p1,k2)x2; p1, k1; ONO, k5, OAO, k5, O, skp, O  
 54) k1, (p1,k2)x2; p1, k1; (ON)x2, k4, OAO, k4, (skp,O)x2  
 56) k1, wrap 3-block, p1, wrap 3-block, k1, ONO, k7, O, skp, k6, O, skp, O  
 58) k1, (p1,k2)x2; p1, k1; (ON) x2;, k5, NO, k6, (skp, O)x2  
 60) k1, (p1,k2)x2; p1, k1; ONO, (KO, k2, A, k2, O) x2, k, O, skp, O

94-124 and 126-156



- 62) k1, p1, wrap 5 st-block, p1, k1, (ON)x2, k1 (O, k2, A, k2, O, k1)x2; O, skp, O  
 64) k1, (p1, k2)x2, p1, k1, ONO, k2, (k1, O, kAk, O, k2)x2; k1, O, skp, O  
 66) k1, (p1, k2)x2, p1, k1, (ON)x2, k1, (k1, O, kAk, O, k2)x2; (skp, O)x2  
 68) k1, wrap 3-block, p1, wrap 3-block;k1, ONO, k3, (k2, OAO, k3)x2; k2, O, skp, O  
 70) k1, (p1, k2)x2; p1, k1; (ON)x2, k2, (k2, OAO, k3)x2; k1, (skp,O)x2  
 72) k1, (p1, k2)x2;p1, k1; ONO, k4, (k3, ON, k3)x2; k3, O, skp, O

**NOTE: CHART USERS - the first nine stitches continue in pattern - a 12 row repeat**

- 74) k1, p1, wrap 5 st-block, p1, k1; (ON)x2, k3, (k3, ON, k3)x2; k2, (skp,O)x2  
 76) k1, (p1, k2)x2; p1, k1; ONO, kO, k2, A, (k2, OKO, k2, A)x2; k2, OK, O, skp, O  
 78) k1, (p1, k2)x2; p1, k1; (ON)x2, O, k2, A, (k2, OKO, k2, A)x2; k2, O,(skp,O)x2  
 80) k1, wrap 3-block, p1, wrap 3-block; k1, ONO, k3, OkA (kO, k3, OkA)x2; k3, KO, O, skp, O  
 82) k1, (p1, k2)x2; p1, k1; (ON)x2, k2, OkA (kO, k3, OkA)x2; KO, k2,(skp, O)x2  
 84) k1, (p1, k2)x2; p1, k1; (ON)x2, k4, OA (O, k5, OA)x2; O, k4, (skp, O)x2  
 86) k1, p1, wrap 5 st-block, k1, p1; ONO, k5, OA (O, k5, OA)x2; O, k5, O, skp, O  
 88) k1, (p1, k2)x2; p1, k1; ONO, k7, O, (N, k6, O)x3; skp, O  
 90) k1, (p1, k2)x2; p1, k1; (ON)x2, k5, ( skp, O, k6) x3; (skp, O)x2  
 92) k1, wrap 3-block, p1, wrap 3-block; k1, ONO ; KO, (O, k2, A, k2, O, k1) x4; O, skp, O

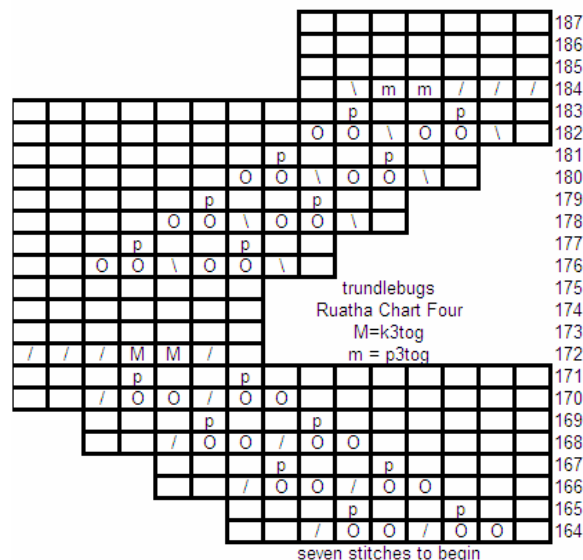
**NOTE: CHART USERS: continuing first nine stitches in pattern, repeat rows 62 -93 twice more**

94) k1, (p1, k2)x2, p1, k1, (ON)x2, k1 (O, k2, A, k2, O, k1)x3; O, k2, A, k2, (skp, O) x2  
 96) k1, (p1, k2)x2, p1, k1, ONO, k2, (k1, O, kAk, O, k2)x4; k1, O, skp, O  
 98) k1, p1, wrap 5 st-block, p1, k1; (ON)x2; k1, (k1, O, kAk, O, k2)x4; (skp, O)x2  
 100) k1, (p1, k2)x2, p1, k1, ONO, k3, (k2, OAO, k3)x4; k2, O, skp, O  
 102) k1, (p1, k2)x2; p1, k1; (ON)x2, k2, (k2, OAO, k3)x4; k1 (skp, O)x2  
 104) k1, wrap 3-block, p1, wrap 3-block; k1, ONO, k4, (k3, ON, k3)x4; k3, O, skp, O  
 106) k1, (p1, k2)x2, p1, k1; (ON)x2, k3, (k3, ON, k3)x4; k2, (skp, O  
 108) k1, (p1, k2)x2; p1, k1; ONO, kO, k2, A, (k2, OKO, k2, A)x4; k2, OK, O, skp, O  
 110) k1, p1, wrap 5 st-block, p1, k1; (ON)x2, O, k2, A, (k2, OKO, k2, A)x4; k2, O, (skp, O)x2  
 112) k1, (p1, k2)x2; p1, k1; ONO, k3, OkA (kO, k3, OkA)x4; k3, KO, O, skp, O  
 114) k1, (p1, k2)x2; p1, k1; ONO, k3, OkA (kO, k3, OkA)x4; k3, KO, O, skp, O  
 116) k1, wrap 3-block, p1, wrap 3-block; k1, ONO, k5, OA (O, k5, OA)x4; O, k5, O, skp, O  
 120) k1, (p1, k2)x2; p1, k1; ONO, k5, OA (O, k5, OA)x4; O, k5, O, skp, O  
 122) k1, (p1, k2)x2; p1, k1; ONO, k7, O, (N, k6, O)x5; skp, O  
 124) k1, p1, wrap 5 st-block, p1, k1; ONO, (k6, skp, O) x5; k7, O, skp, O  
  
 126) k1, (p1, k2)x2; p1, k1; ONO ; K, (O, k2, A, k2, O, k1) x6; O, skp, O  
 128) k1, (p1, k2)x2, p1, k1, (ON)x2, (O, k2, A, k2, O, k1)x6 (last repeat skip the k1); ( skp, O) x2  
 130) k1, wrap 3-block, p1, wrap 3-block, k1, ONO, k2, (k1, O, kAk, O, k2)x6; O, skp, O  
 132) k1, (p1, k2)x2, p1, k1, p1, k1; (ON)x2, k1, (k1, O, kAk, O, k2)x6; (skp, O)x2  
 134) k1, (p1, k2)x2, p1, k1, ONO, k3, (k2, OAO, k3)x6; k2, O, skp, O  
 136) k1, p1, wrap 5 st-block, p1, k1; (ON)x2, k2, (k2, OAO, k3)x6; k1, (skp, O)x2  
 138) k1, (p1, k2)x2, p1, k1; ONO, k4, (k3, ON, k3)x6; k3, O, skp, O  
 140) k1, (p1, k2)x2, p1, k1; (ON)x2; k3, (k2, skp, O, k4)x6; k2 (skp, O) x2  
 142) k1, wrap 3-block, p1, wrap 3-block, k1,; ONO, kO, k2, A, (k2, OKO, k2, A)x6; k2, OK, O, skp, O  
 144) k1, (p1, k2)x2, p1, k1; (ON)x2, O, k2, A, (k2, OKO, k2, A)x6; k2, O, (skp, O)x2  
 146) k1, (p1, k2)x2; p1, k1; ONO, k3, OkA (kO, k3, OkA)x6; KO, k3, O, skp, O  
 148) k1, p1, wrap 5 st-block, p1, k1; (ON)x2, k2, OkA (kO, k3, OkA)x6; KO, k2, (skp, O)x2  
 150) k1, (p1, k2)x2, p1, k1; ONO, k5, OA (O, k5, OA)x6; O, k5, O, skp, O  
 152) k1, (p1, k2)x2; p1, k1; (ON)x2, k4, OA (O, k5, OA)x6; O, k4, (skp, O)x2  
 154) k1, wrap 3-block, p1, wrap 3-block, k1,; ONO, k7, O, (N, k6, O)x7; skp, O  
 156) k1, (p1, k2)x2, p1, k1; (ON)x2, k5, skp, O; (k6, skp, O) x6; k6, (skp, O)x2  
 158) k1, (p1, k2)x2; p1, k1; ONO ; K (O, k2, A, k2, O, k1) x8; O, skp, O  
 159 - knit as presented;

**NOTE: CHART USERS - Continue the wrapped rib in pattern:  
 ROUND VERSION - ODD rows are reversed. see Addendum**

160) k1, p1, wrap 5 st-block, p1, k1; ONO; k67, O, skp, O  
 162) k1, (p1, k2)x2, p1, k1; ONO, k69, O, skp, O  
 (Note - insert resting rows and bump row numbers up when all other edits done)  
 163) k1, (p1, k2)x2, p1, k1; ONO, k1 (k1, OON x2; k2)x10; O, skp, O  
 164) k1, (p1, k2)x2, p1, k1; k4; [(k2, p1)x2; k3]x10; k3  
 165) k1, wrap 3-block, p1, wrap 3-block, k1; ONO, k2; (k3, OONx2; k2)x10, k1, O, skp, O  
 166) k1, (p1, k2)x2, p1, k1, k5; [k2, (k2, p1)x2; k3]x10, k4  
 167) k1, (p1, k2)x2, p1, k1; ONO, k3; [k5, OONx2; k2]x10; k2, O, skp, O  
 168) k1, (p1, k2)x2, p1, k1; k6, [k4, (k2, p1)x2; k3]x10, k5

- 169) k1, (p1,k2)x2,p1, k1; ONO, k4, [k7, OONx2;k2]x10; k3, O, skp,O
- 170) k1,(p1,k2)x2, p1, k1; k7 [k6,(k2,p1)x2; k3]x10, k6
- 171) k1, p1, wrap 5 st-block, p1, k1; ONO, k5; [k1,N,k3togx2;Nx3]x10;k4, O, skp, O
- 172) k1,(p1,k2)x2,p1;k86
- 173) k1,(p1,k2)x2,p1,k1; ONO, k81, O, skp, O
- 174) k1,(p1,k2)x2,p1;k88
- 175) k1, (p1,k2)x2;p1k1; ONO; k7;[k1, (skp,OO)x2; k2]x10; k6, O,skp,O
- 176) k1, (p1,k2)x2, p1,k1; k10, [(k2,p1)x2, k3]x10; k9
- 177) k1, wrap 3-block, p1, wrap 3-block,k1; ONO, k1 [k1,(skp,OO)x2; k4]x11; k5,O,skp, O
- 178) k1, (p1,k2)x2, p1,k1; k4, [(k2,p1)x2;k5]x12; k3
- 179) k1, (p1,k2)x2, p1,k1; ONO, k2,[k1, (skp,OO)x2; k6]x11; k5, O, skp, O
- 180) k1, (p1,k2)x2, p1,k1, k5, [(k2,p1)x2; k7]x12; k4
- 181) k1, (p1,k2)x2, p1,k1, ONO, k3, [k1, (skp,OO)x2; k8]x11; k7, O, skp, O
- 182) k1, (p1,k2)x2, p1,k1; k6, [(k2,p1)x2,k9]x12; k5
- 183) k1,p1,wrap 5 st-block, p1,k1;ONO, k4,[skp x3; p3togx2;skp, k1]x11, k8, O, skp, O
- 184) k1, (p1,k2)x2, p1,k91, O, skp, O
- 186) k1, (p1,k2)x2, p1,k1, ONO, k93, O,skp,O
- 186) k1, (p1,k2)x2, p1,k100
- 187) k1, (p1,k2)x2, p1,k1; ONO,k93,O,skp,O
- 188) k1, (p1,k2)x2, p1,k102
- 189) knit as presented.



Add Tunnel Snake Edge:

For **TRIANGLE** version:

RS) knit across to last three stitches:

Working on just the last three stitches; knit 20 rows. Bind off 3. Pick up and purl 9 stitches along the side. Pickup and purl 1 more together with 1st live stitch of shawl body. (10 stitches to edge)

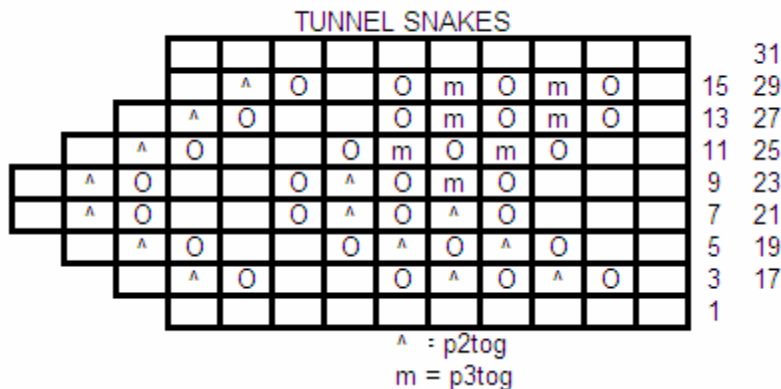
For **CIRCLE** version - cast on 10 stitches. Purl back purling the last cast on stitch with 1st live stitch of shawl body.

1) k7, O, p2tog, k1

2 and all "return" rows) purl until 1 stitch remains; purl together with next body stitch

- 3) k1, (O,p2tog)x2, O, k2, O, p2tog, k1
- 5) k2, (O,p2tog)x2, O, k2, O, p2tog, k1
- 7) k3 (O,p2tog)x2, O, k2, O, p2tog, k1
- 9) k3, O,p3tog, O,p2tog, O, k2, O, p2tog, k1
- 11) k2,(O,p3tog)x2, O, k2, O, p2tog, k1
- 13) k1,(O,p3tog)x2, O, k2, O, p2tog, k1
- 15) k1, (O,p3tog)x2, O, k2, O, p2tog, k1

17-29) repeat 3-15



31) k 7, O, p2tog, k1

32) purl 9, p2tog

Circle version: Repeat around. Graft Ends together. Extra Ease Should not be necessary.

Triangle Version: continue until reach 3 border stitches of the other edge; Ending on an inward row.

\* knit 3, turn, k2, k2tog, turn; repeat from \* until last edge stitch worked off, bind off three.

#### **ADDENDUM:**

##### **Odd rows for flat knit:**

165) p1, (k1, p2) x2, k1, p1; p3, [p3, (k1,p2) x2] x10, p4

167) p1, (k1, p2) x2, k1, p1; p4, [p3, (k1, p2) x2, p2] x10, p5

169) p1, (k1, p2) x2, k1, p1; p5, [p3, (k1, p2) x2, p4] x10, p6

171) p1, (k1, p2) x2, k1, p1; p6, [p3, (k1, p2) x2, p6] x10, p7

173) p1, (k1, p2) x2, k1, p1; p85

175) p1, (k1, p2) x2, k1, p1; p87

177) p1, (k1, p2) x2, k1, p1; p9, [p3, (k1, p2) x2] x10, p10

179) p1, (k1, p2) x2, k1, p1; p8, [p5, (k1, p2) x2] x11, p4

181) p1, (k1, p2) x2, k1, p1; p9, [p7, (k1, p2) x2] x11, p5

183) p1, (k1, p2) x2, k1, p1; p10, [p9, (k1, p2) x2] x11, p6

185) p1, (k1, p2) x2, k1, p1; p95

187) p1, (k1, p2) x2, k1, p1; p97

189) p1, (k1, p2) x2, k1, p1; p99

Picture and Test knit  
courtesy of  
"Alanesian"