

# WEDDING PEACOCK

Test knit and phot courtesy of Verna Knapp

## CHARTS ONLY

Suggested Needle size: US 3 needles

Suggested Yarn weight: lace or cobweb

## STITCH KEY:

blank square - knit

v = knit front and back

/ = k2tog

\ = skip OR ssk OR k2tog tbl (left leaning decrease)

O = yarnover

m5 = k,O,k,O,k into single stitch

A = double decrease (my preference is for slip 2 together knitwise, knit one, pss0)

w = KOK in single stitch

@ = delayed yarnover; yarnover as normal - on the return row, yarnover, slip the previous yo purlwise with yarn in back, resulting in two parallel strands to be treated as one

< # - knit # of stitches, moving beginning of round # stitches left.

m9 - K,O,K,O,K,O,K,O, K (9 stitches) into the single loop

O@ = delayed DOUBLE yarnover - as with @, but double yarnover on the current row, treat as a single large loop on return row

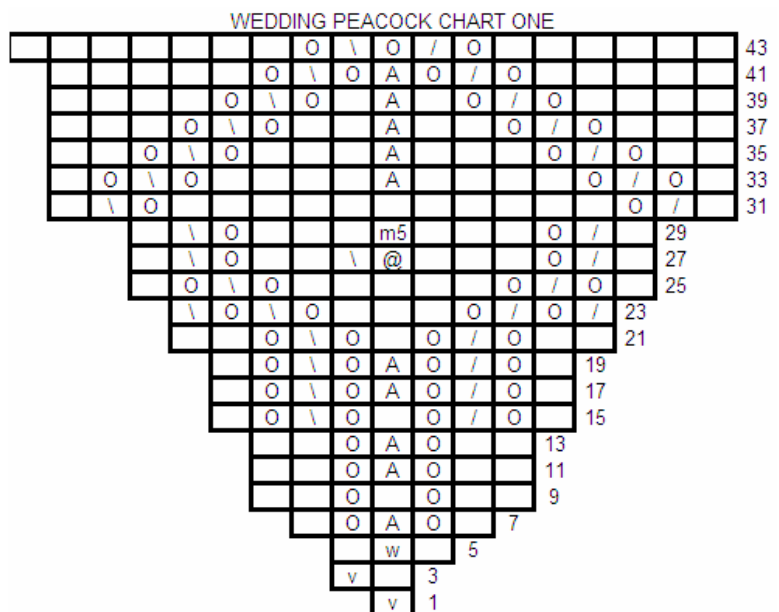
## CAST ON/SETUP:

Cast on 10 join and knit around once.

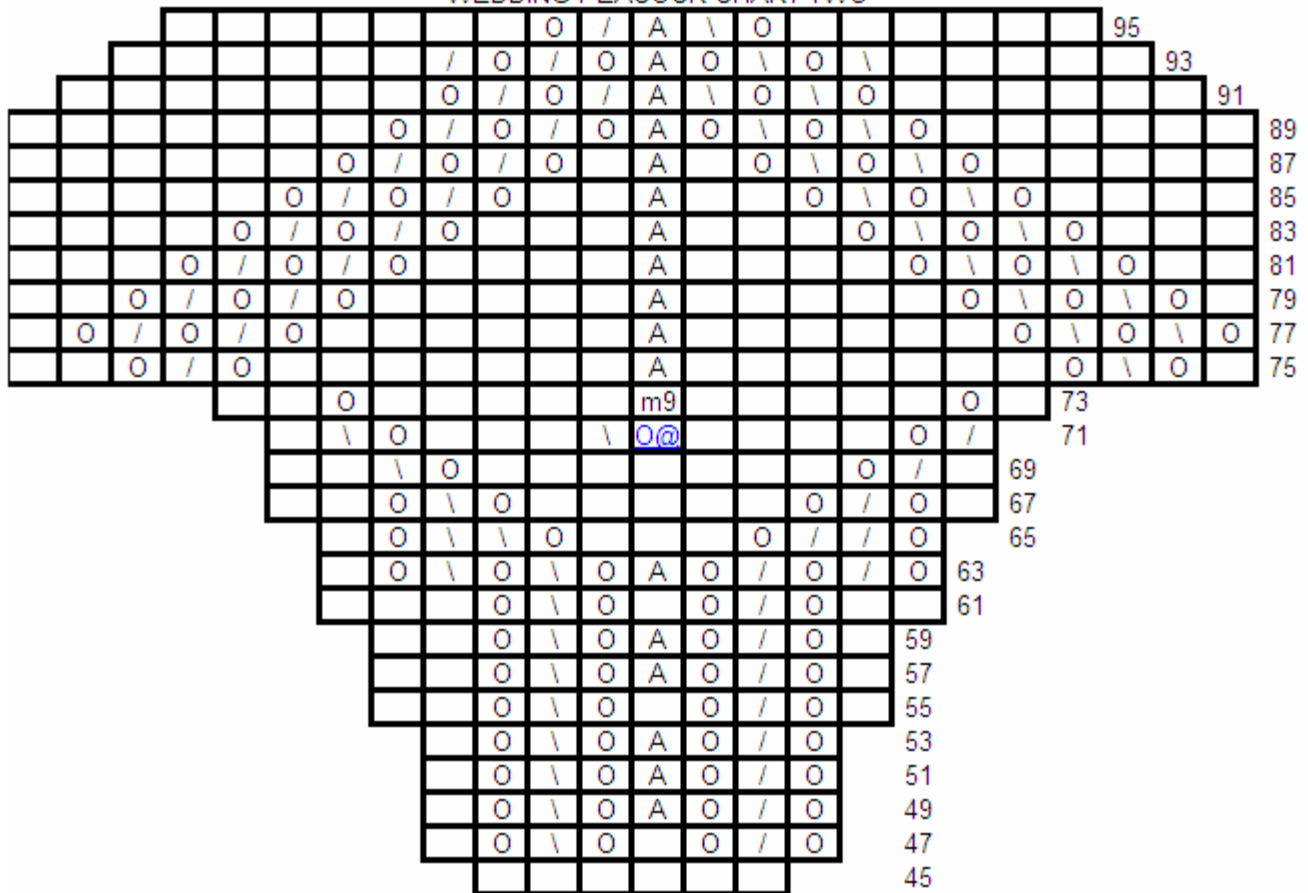
Continue with charts, working each row of the chart sufficient times to go around the shawl.

Uncharted rows are knit

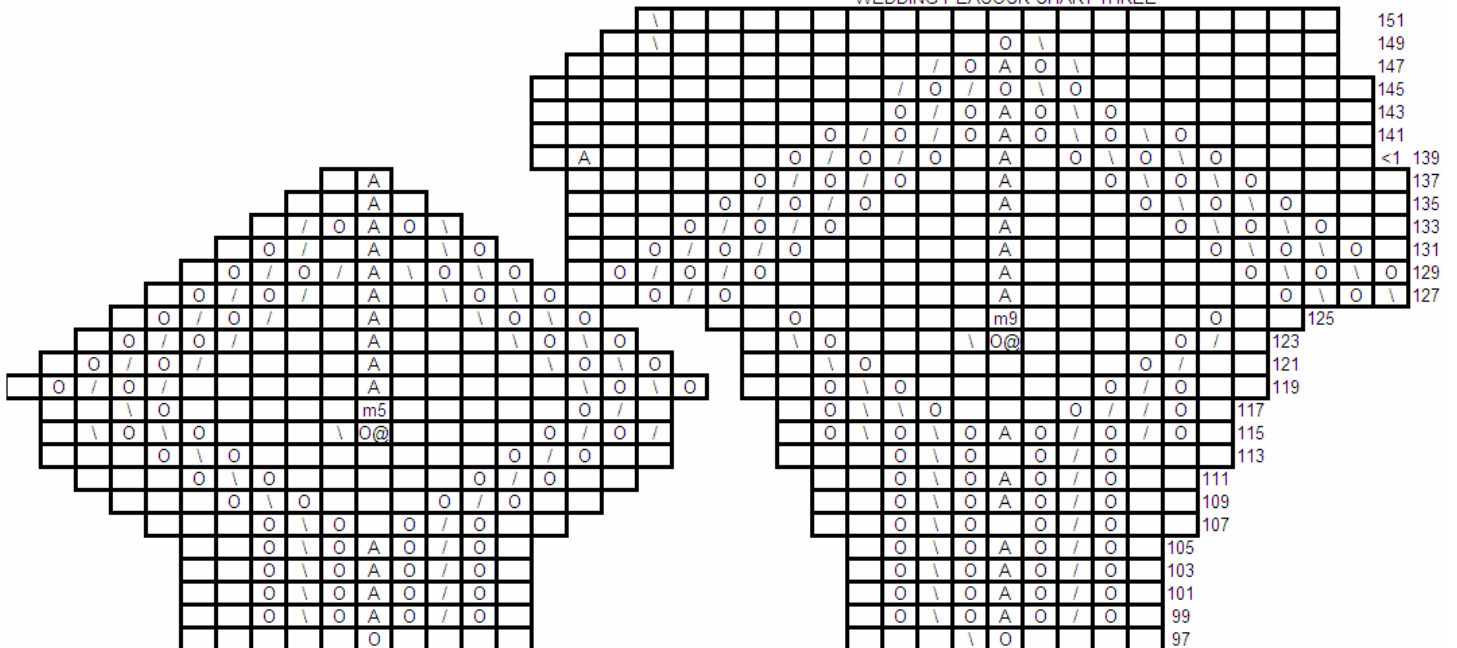
(with the exceptions of @ and O@ stitches: see key)

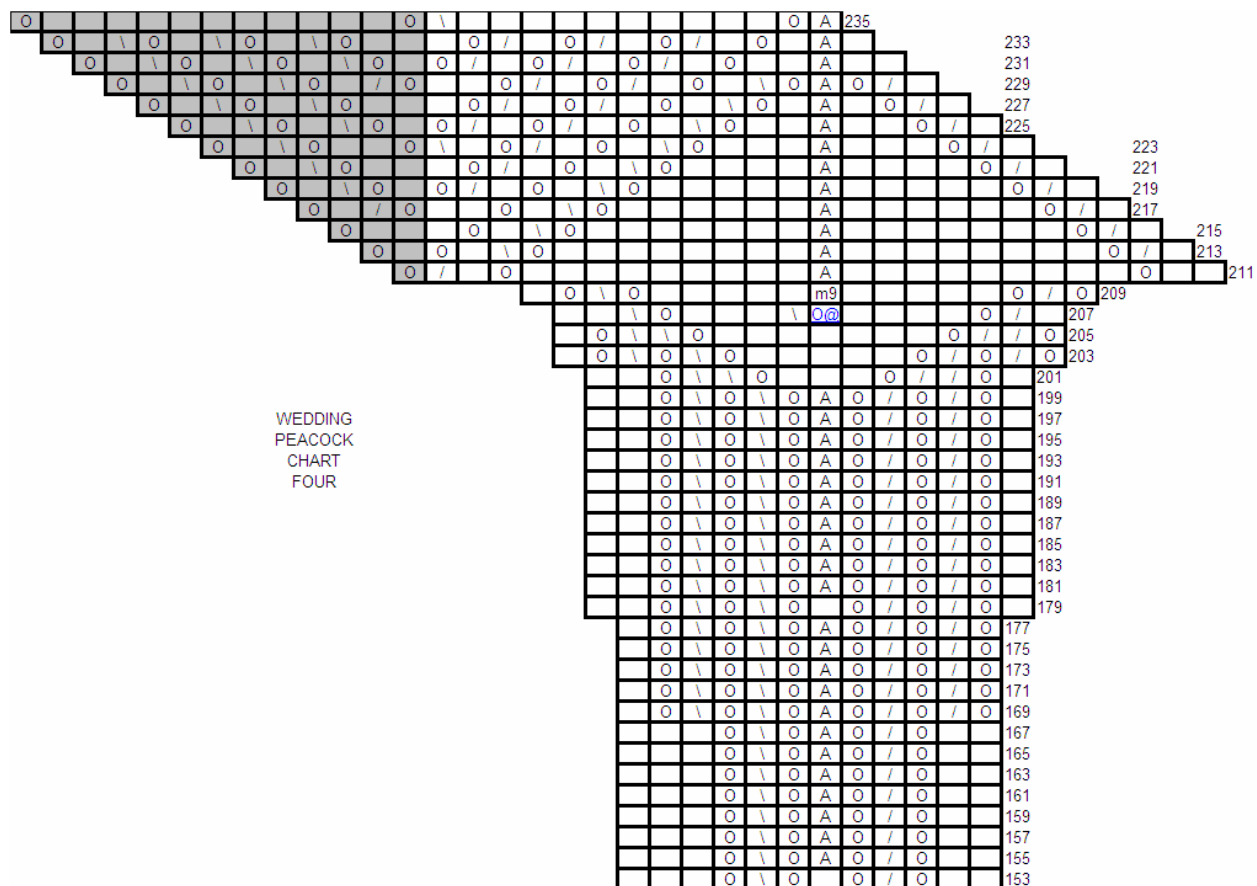


WEDDING PEACOCK CHART TWO



WEDDING PEACOCK CHART THREE





**FINISH :**

Work two rows of plain knit.

Bind off using: k1; \* return stitch to left needle, k1, return stitch to left needle, k2tog tbl; repeat from \*

This should be able to be blocked with points at the center of the feather, points at the center of the fans, or with points at both centers.

\*\*\*\*\*

If more diameter is needed, the fan pattern established between rows 231 and 236 can be continued for up to 5 more repeats (30 more rows); maintaining the double decrease above the feathers to "swallow" stitches as the lines move outward.

\*\*\*\*\*